

# KALT AG

WIR BRINGEN HOLZ IN FORM

**“Thanks to coresuite time, employees can optimally record their output on orders, thus allowing efficient cost control.”**

Lukas Kalt, Managing Director.

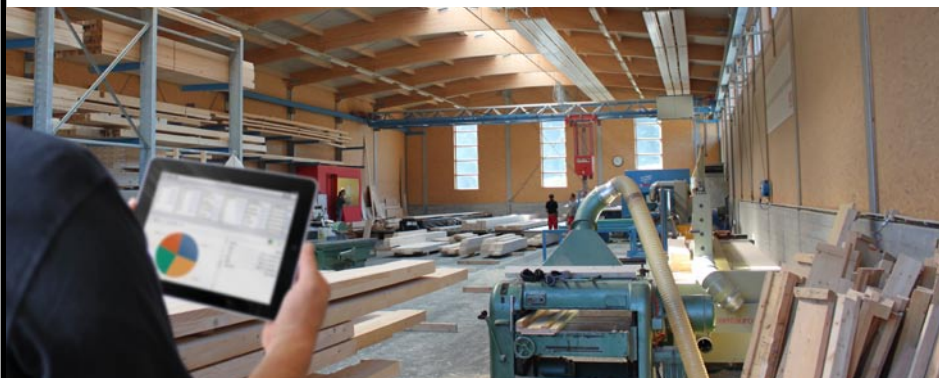
The traditional family business of Kalt AG has always been open to innovation and progress. Facing the problems of not being able to control costs for production orders or recording internal costs (hours worked, expenses, etc.) per order, a solution had to be found.



These problems have been solved with the introduction of **coresuite time**, which allows electronic time recording with a direct connection to SAP. Using barcode control, employees enter their working hours and output directly and keep it up to date. Paper collection, as well as the interface between the workshop and office, have been eliminated, meaning valuable working hours could be gained. Meanwhile, other **coresuite** products such as

**coresuite mobile** were added to further simplify and improve work.

With the introduction of **coresuite** products, it was possible to increase liquidity indirectly, since orders could now be processed and settled much faster. In addition to improved cost control and more accurate quoting, additional advantages regarding holidays and overtime management have also emerged. Thanks to the new **coresuite mobile**, Lukas Kalt, CEO of Kalt AG, can now also access all business data from SAP away from the office, which in turn gives him a quick and simple overview of his company, gives him greater flexibility and keeps him up to date.



“I wouldn’t want to have to manage without using **coresystems** and I am already looking forward to continued innovation and joint projects.”



Lukas Kalt, managing director.

#### About Kalt AG.

Kalt AG is a family company steeped in tradition. For generations, they have been committed to wood as a material. Our company was founded in 1921 as a sawmill.

Continuous expansions and innovations have followed to this day. Thus, a corporation grew from a one-man business that is still owned by the Kalt family. Klaus Kalt has been the owner since 1991.

Under his leadership, and given the desire for innovation of his son Lukas, the current CEO, it was converted from sawmill to cutting/assembly plant. Today, Kalt AG is specialised in joinery for timber building systems as well as conventional carpentry work.

#### Address.

Kalt AG  
Bossenhausstrasse 211  
CH-5325 Leibstadt  
www.kaltag.ch

#### About coresystems ag.

**coresystems ag**, which was founded in 2002, has its headquarters in Windisch, Switzerland. Through its steady growth, more offices in London, Copenhagen, Shanghai, New York City and a support centre in Galway have been added. It is the leading provider of standardised add-on solutions for SAP Business One and SAP GLOBAL GOLD Certified Partners (SSP).

The **coresuite** product line is distributed by qualified SAP partners around the globe. The customer portfolio includes thousands of small, medium and large companies from various sectors of industry and services.